

CABC1 Antibody (C-term D531)
Purified Rabbit Polyclonal Antibody (Pab)
Catalog # AP7116b**Specification**

CABC1 Antibody (C-term D531) - Product Information

Application	WB,E
Primary Accession	Q8NI60
Reactivity	Human
Host	Rabbit
Clonality	Polyclonal
Isotype	Rabbit IgG
Calculated MW	71950
Antigen Region	516-545

CABC1 Antibody (C-term D531) - Additional Information**Gene ID** 56997**Other Names**

Chaperone activity of bc1 complex-like, mitochondrial, Chaperone-ABC1-like, 2711-, aarF domain-containing protein kinase 3, ADCK3, CABC1

Target/Specificity

This CABC1 antibody is generated from rabbits immunized with a KLH conjugated synthetic peptide between 516-545 amino acids from the C-terminal region of human CABC1.

Dilution

WB~~~1:1000

E~~~Use at an assay dependent concentration.

Format

Purified polyclonal antibody supplied in PBS with 0.09% (W/V) sodium azide. This antibody is prepared by Saturated Ammonium Sulfate (SAS) precipitation followed by dialysis against PBS.

Storage

Maintain refrigerated at 2-8°C for up to 2 weeks. For long term storage store at -20°C in small aliquots to prevent freeze-thaw cycles.

Precautions

CABC1 Antibody (C-term D531) is for research use only and not for use in diagnostic or therapeutic procedures.

CABC1 Antibody (C-term D531) - Protein Information**Name** COQ8A {ECO:0000303|PubMed:27499294, ECO:0000312|HGNC:HGNC:16812}**Function** Atypical kinase involved in the biosynthesis of coenzyme Q, also named ubiquinone, an

essential lipid-soluble electron transporter for aerobic cellular respiration (PubMed:[21296186](#), PubMed:[25498144](#), PubMed:[25540914](#), PubMed:[27499294](#), PubMed:[36302899](#), PubMed:[38425362](#)). Its substrate specificity is still unclear: may act as a protein kinase that mediates phosphorylation of COQ3 (By similarity). According to other reports, acts as a small molecule kinase, possibly a lipid kinase that phosphorylates a prenyl lipid in the ubiquinone biosynthesis pathway, as suggested by its ability to bind coenzyme Q lipid intermediates (PubMed:[25498144](#), PubMed:[27499294](#)). However, the small molecule kinase activity was not confirmed by another publication (By similarity). Shows an unusual selectivity for binding ADP over ATP (PubMed:[25498144](#)).

Cellular Location

Mitochondrion membrane; Single-pass membrane protein {ECO:0000255, ECO:0000305|PubMed:25216398}

Tissue Location

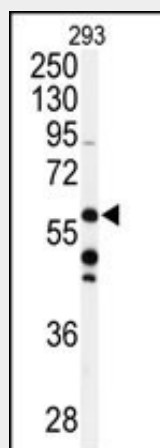
Widely expressed, with highest levels in adrenal gland, heart, pancreas, nasal mucosa, stomach, uterus and skeletal muscle.

CABC1 Antibody (C-term D531) - Protocols

Provided below are standard protocols that you may find useful for product applications.

- [Western Blot](#)
- [Blocking Peptides](#)
- [Dot Blot](#)
- [Immunohistochemistry](#)
- [Immunofluorescence](#)
- [Immunoprecipitation](#)
- [Flow Cytometry](#)
- [Cell Culture](#)

CABC1 Antibody (C-term D531) - Images



Western blot analysis of anti-CABC1 Antibody (C-term D531) (Cat.#AP7116b) in 293 cell line lysates (35ug/lane). CABC1 (arrow) was detected using the purified Pab.

CABC1 Antibody (C-term D531) - Background

CABC1 is one of several proteins for which expression is induced by p53 expression. The *S. pombe* homolog, ABC1, is a chaperone-like protein essential for the proper conformation and functioning of

protein complexes in the respiratory chain.

CABC1 Antibody (C-term D531) - References

Iizumi, M., et al., Cancer Res. 62(5):1246-1250 (2002).